



GATINEAU
HEALTH
FOUNDATION



Annual Overview

2021 – 2022



Table of Contents

A word from the President of the board of Directors and the Director General	3.
Message from the Chief Executive Officer of the CISSS de l'Outaouais	4.
Our team	6.
Revenues	8.
Fundraising activities	9.
Achievements	10.
Recognition	14.
2021-2022 donors	16.
Cumulative donations 1984-2022	18.
Independent auditor's report	20.
Summary of financial statements	21.

A word from the President and the Director General

The past year was a turning point in the history of the Gatineau Health Foundation, which has reorganized its business model after almost 37 years of existence to focus on its mission and raison d'être: philanthropy. Commercial activities have been replaced by a model based on philanthropy, allowing us to reach our objective of increasing fundraising revenues, but also to be able to dream big and to develop a vision that can take our work to the next level.

I became President of the Gatineau Health Foundation's Board of Directors at the onset of this transition period, just as we began this historic pivot in the organization's journey. As President, my objectives are to maintain sound governance within the organization and to ensure the relevance of the Foundation's actions to meet the needs of the population. Our philanthropic vocation allows us to focus all our efforts towards our mandate and our fundraising activities, and to actively collaborate with our donors, volunteers and partners to bring about our shared vision of building not just any new hospital, but the very best hospital possible, within our broader mission of building an excellent health and social services network right here in our region!

In spite of the ongoing pandemic context and measures limiting contacts and face-to-face events, the Foundation contributed through major donations, telemarketing and direct mail solicitation, and innovated by holding virtual sports events (the Marche en Rose Outaouais, the Cyclotour Santé Outaouais and the Défi Ski Santé). In this period of transition and its corresponding vision of change, the Foundation maintains its commitments in order to maximize its impact on its partner and beneficiary, the CISSS de l'Outaouais, and to reach and exceed its financial objectives. We are increasingly aware of the importance of our regional health network and, above all, of the urgent need for significant investments to enhance, optimize and repatriate health and social services. Investing where it matters most is a core value shared by all Board members, staff, donors, volunteers and corporate partners of the Foundation.

We are proud to be able to contribute to the future of our community and to be able to share this annual overview with all of you, testifying to the concrete achievements of the health and social services network. We thank you for being part of this transformation and for your generous contributions.

MR. JEAN PIGEON
Director General




MR. LUC CADIEUX
President




Message from the Chief Executive Officer of the CISSS de l'Outaouais

The past few years have been marked by countless challenges, but also by many opportunities. Resilience, innovation and collaboration are just a few of the words that could describe the colossal work done by the Gatineau Health Foundation.

Now more united than ever, the Foundation is present and continues to mobilize to support the improvement of care, the development of teaching and the expansion of research, all of which contribute significantly to the development and influence of the CISSS l'Outaouais.

Each of the Foundation's fundraising activities contributes to the development of several projects, including the Vaccibus, which travelled across the Outaouais to guarantee vaccination coverage for the entire population of the region.

The development of the therapeutic walking path at the Pierre-Janet Hospital is a perfect example of the Foundation's great collaborative work, creating a pleasant living environment for patients and improve their condition. The development of this outdoor space includes the therapeutic walking path, exercise and activity stations as well as a playground. It aims to create a pleasant living environment for patients and improve their condition. What a wonderful success!

Finally, let's not forget the project for the university affiliated hospital, which will not only provide better access to care for the region's population, but will also increase the services offered here in the Outaouais.

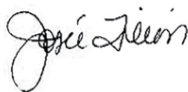
For all these reasons, I would like to take this opportunity to express, on behalf of myself and the organization, my gratitude for the Foundation's significant contribution to the achievement of our primary mission: to maintain, improve and restore the health and well-being of the people of the Outaouais region.

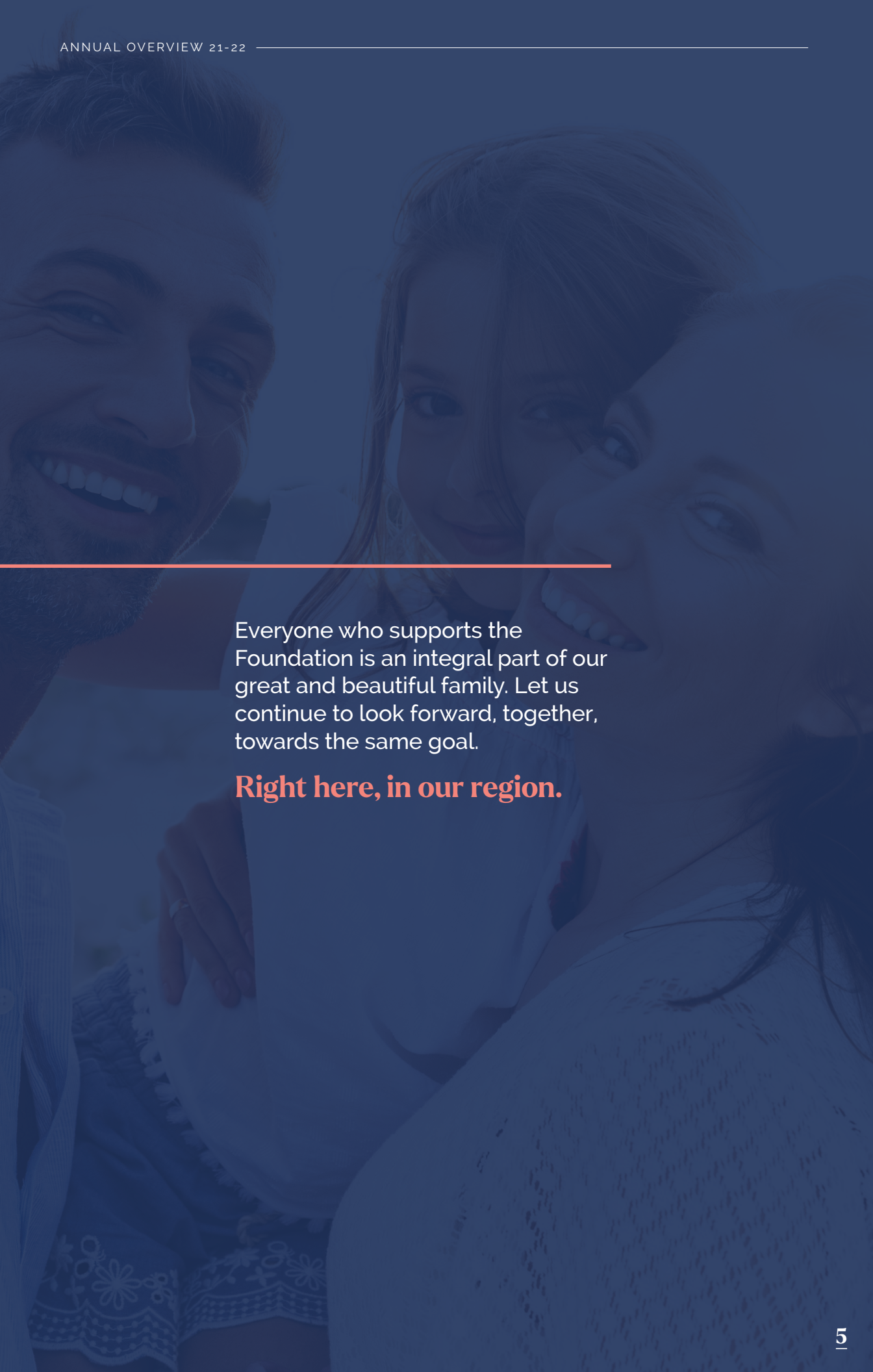
I would also like to highlight the great generosity and commitment of the Outaouais population. We are happy to be able to count on such a strong and engaged community to support our most precious asset: health.

I see bright things ahead for the years to come, and thanks to your commitment, we already have much to celebrate every day.

Everyone who supports the Foundation is an integral part of our great and beautiful family. Let us continue to look forward, together, towards the same goal.

MRS. JOSÉE FILION
Chief Executive Officer



Everyone who supports the Foundation is an integral part of our great and beautiful family. Let us continue to look forward, together, towards the same goal.

Right here, in our region.

Our team

AS OF 31 MARCH 2022

BOARD OF DIRECTORS



Mr. Luc Cadieux
President
Retired from the health and social services network, consultant



Mrs. Bettyna Bélizaire
Secretary
Director General, AFIO & Municipal Councillor for the Plateau district



Me Nadine Bigras
Administrator
Lawyer,
RGPL Avocats



Dr. Josée Bussièrès
Administrator
Doctor, CISSS de l'Outaouais



Mr. Gilles Carpentier
Administrator
Former Municipal Councillor, Gatineau & Retired Federal Public Servant



Mrs. Caroline Malo
Vice-president
Director General, Le Groupe PF, Brisson Peinture Inc.



Mrs. Julie Marcotte
Administrator
Wealth Management Advisor, FDP



Mr. Jean Pigeon
Director General
Wealth Management Advisor, FDP



Mr. Tony Priftakis
Administrator
Restaurant Owner, Buffet des Continents, Ottavio



Mr. Jean Ravenda
Administrator
President, Club Piscine Super Fitness



Me Véronique Semexant
Treasurer
Notary, Votre Notaire Inc.



Mr. Jean Tourigny
Administrator
Management, Performance and Excellence Consultant



Me Mathieu Turpin
Administrator
Notary, PME Inter Notaires



Mrs. Josée Filion
Observer Member
Chief Executive Officer, CISSS de l'Outaouais

FUNCTIONAL MANAGERS AND ADMINISTRATIVE STAFF



Jean Pigeon
Director General



Chantal Dompierre
Director, Major Gifts and Planned Giving



Serge Leyan
Director, Finance & Administration



Ghizlane Maalmi
Director, Relations and Fund Allocation



Julie Patrice
Assistant to the DG & HR Coordinator



Monique Washnuk
Director of Annual Giving and Community Engagement



Caleb Adalakoun
Administrative Technician



Flore Adja
Finance Clerk



Marylou Gauthier
Coordinator, Communications and marketing



Cynthia Tassé-Lamarche
Coordinator, Annual Giving and Community Engagement



Sherley Toussaint
Major Gifts Development Officer

OUR COMMITTEES

Governance Committee

Luc Cadieux, President and Chairman of the Board

Alexandre Martel

Jean Pigeon, Director General, GHF

Me Véronique Semexant, Board Treasurer

Jean Tourigny, Board Member

Human Resources Committee

Me Nadine Bigras, President, Board Member

Luc Cadieux, Board Member

Gilles Carpentier, Board Member

Julie Patrice, Assistant to the DG & HR Coordinator, GHF

Jean Pigeon, Director General, GHF

Planned Gifts Committee

Me Mathieu Turpin, President, Board Member

Natacha Asselin-Guay

Chantal Dompierre, Director, Major Gifts and Planned Giving, GHF

Julie Marcotte, Board Member

Me Alexandre Sirois-Trahan

Investment Committee

Julie Marcotte, President, Board Member

Sophie Lemaire

Serge Leyan, Director, Finance & Administration, GHF

Pierre Mousseau

Communications-Marketing Committee

Caroline Malo, President, Board V-P

Bettyna Bélizaire, Board Secretary

Kimberly Biggs

Denis Bouchard

Martin Godcher

Natalie Lamont

Jean Pigeon, Director General, GHF

Louise Poirier

Audit Committee

Sophie Beaulieu, President, External Member

François Leblanc

Serge Leyan, Director, Finance & Administration, GHF

Jean Pigeon, Director General, GHF

Me Véronique Semexant, Board Treasurer

Jean Tourigny, Board Member

Relations and Fund Allocation Committee

Luc Cadieux, President and Chairman of the Board

Dr. Josée Bussièrès, Board Member

Ghizlane Maalmi, Director, Relations and Fund Allocation, GHF

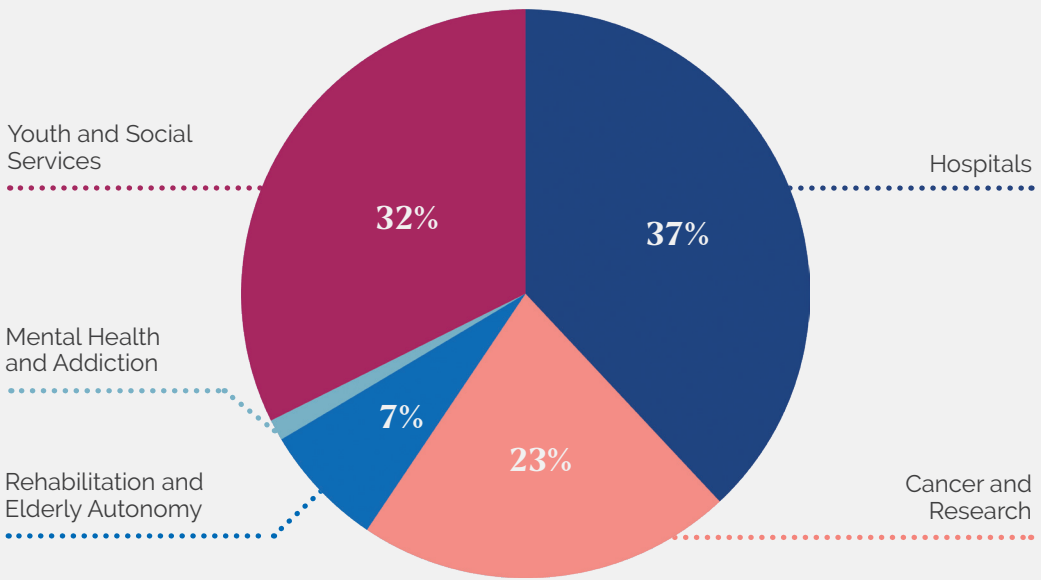
Jean Pigeon, Director General, GHF

Tony Priftakis, Board Member

Jean Ravenda, Board Member

Philanthropic income and investments of the Gatineau Health Foundation

INVESTMENTS BY SECTOR



TOTAL : **\$1 116 127**

INCOME BY SECTOR

Planned Gifts	\$19 933
Major Gifts	\$1 380 418
Annual Gifts	\$524 351
Events	\$800 716

TOTAL : **\$2 725 418**

Fundraising activities

Thank you to all the organizers, participants, partners and volunteers for your continued support, engagement, resiliency and creativity which has raised a total of **\$812,272.64** !

MCHAPPY DAY
2021
\$12 540



ROADSIDE SOLICITATION 2021
\$11 036,61



LOTO SANTÉ
2021
\$308 130



LES RÊVES DE MONIQUE 2021
\$65 869,63



DÉFI SKI SANTÉ 2022
\$70 199



MARCHE EN ROSE 2021
\$109 409

CYCLOTOUR SANTÉ OUTAOUAIS 2021
\$245 913



Achievements 2021-2022

The Gatineau Health Foundation is proud to financially support the CISSS de l'Outaouais by funding projects and the acquisition of state-of-the-art equipment that have been prioritized by the CISSS de l'Outaouais, in all sectors of activity.

Here are some of this year's highlights

Oncology

OPTIMIZED GYNAECOLOGICAL ONCOLOGY SURGERIES IN THE SURGICAL UNIT

Surgery is an essential part of treatment for many types of cancer. To prevent the cancer from growing and spreading to surrounding tissues, it is important that surgery is performed as soon as the person is deemed medically ready for it.

Because time is such a crucial factor, patients must often be transferred outside the region when local surgery is not available fast enough. To remedy this situation, the Maniwaki Hospital surgical unit was selected, since it already had several pieces of equipment needed for gynaecological surgery. New equipment had to be purchased and some existing equipment had to be upgraded to avoid transferring patients outside the region, reduce the waiting time for gynaecological oncology surgeries, optimize existing resources and upgrade equipment for better quality of care.

BIOMEDICAL REFRIGERATOR FOR ONCOLOGY MEDICATION

In order to reduce wait times for patients receiving chemotherapy treatments that require refrigerated medication, a secure biomedical refrigerator was purchased to store scheduled patients' drugs directly in the treatment room of the Cancer Centre, and to store the medications needed in the event of an allergic reaction. This will increase the safety of patients at risk of allergic reactions after the oncology pharmacy's opening hours, increase the productivity of pharmacists and nurses by reducing unnecessary travel and disturbances, and reduce distractions and the risk of errors.

INFORMATION DISPLAYS AND ONCOLOGY NURSING TABLES

Even though they were provided information at the start of their treatment, patients at the Cancer Centre often have questions about the course of the treatment, follow-ups, side effects, etc. In addition, there are no tables near the stretchers in the treatment room and although the nurses have access to the patient's table, there is no room to put procedure trays on it. This project enabled the purchase and installation of two televisions in the two waiting rooms to broadcast information on the treatment process, ways to manage side effects and other relevant topics. The project also resulted in the acquisition of bedside tables on the three stretchers in the treatment room, as well as the acquisition of five mayo stands on wheels.



ACQUISITION OF REUSABLE WATER BOTTLES FOR CANCER PATIENTS

Chemotherapy patients need to stay hydrated during their treatment and many patients have tests that require a full bladder. Patients are served glasses of water in Styrofoam cups. The use of a water bottle labelled with volume measurements, donated by the Gatineau Health Foundation, not only makes it easier to calculate the quantities of water, but also considerably reduces environmental impacts.

In 2021, in the midst of the pandemic, I received impeccable care at the Gatineau Cancer Centre. I was able to benefit from equipment provided by the Foundation, and for that I am very grateful. Getting involved for the cause is my way of saying thank you.

CAROLINE

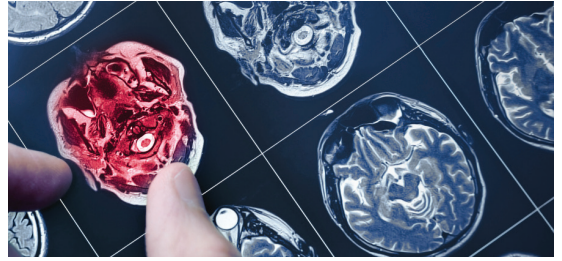
Donor

Hospitals

TECHNICAL FEASIBILITY STUDY FOR HYBRID ROOM AND NEUROSURGERY ROOM

As part of two major projects affecting surgeries at the Hull Hospital, the Gatineau Health Foundation supported the financing of a technical feasibility study. This study aims to examine all aspects related to both projects – namely, a hybrid room and a neurosurgery room – including the impact on operating rooms. These development projects will optimize the work of health care professionals, while improving the services offered to the population by increasing the number and type of neurosurgical procedures performed in the Outaouais.

use of such a system, they are usually in intensive care, intubated and in an unstable condition. Brain injuries cause pathological and physiological changes that lead directly to a cascade of secondary complications.



Adequate monitoring of intracranial parameters with an up-to-date device, coupled with neurological examination, is therefore of paramount importance.

MOBILE VACCINATION CLINIC

Thanks to a close collaboration between the CISSS de l'Outaouais, the Gatineau Health Foundation and local businesses, the mobile vaccination clinic was set up to offer all citizens the opportunity to be vaccinated and to benefit from an equivalent level of service regardless of distance or disability, and thus to increase vaccination capacity in our region.

PALLIATIVE CARE MURALS

The aim of palliative and end-of-life care is to promote quality of life and comfort. To achieve this, the rooms are well-furnished and comfortable, creating a peaceful atmosphere for the patients' final moments. Thanks to donations dedicated to palliative care, the five rooms have been given a new look with the addition of a themed mural in each room (waterfront, nature, etc.), thus promoting relaxation for patients and their families while creating an environment that feels more like home and less like a hospital.



Social services

HEALTH AND WELL-BEING FUND

The Health and Well-Being Fund of the Youth Protection Branch helps many children and young people with health needs who cannot rely on their parents' financial support to meet those needs. This fund enables these children, who are often vulnerable and entrusted to family-type resources or rehabilitation centres, to benefit from adequate and specific health care, such as dental care, psychotherapy, orthopaedics, etc.

ATMOSAIR MATTRESSES FOR PALLIATIVE CARE

One of the priorities for end-of-life patients is to ensure that they are as comfortable as possible. This is why the palliative care rooms at the Gatineau Hospital are equipped with AtmosAir mattresses, which provide palliative care patients with a comfortable bed and prevent pressure ulcers, a common ailment for this clientele.

DEVELOPMENT OF THE FREEMAN COMPLEX OUTDOOR COURTYARD

The Freeman Complex is an important intermediate resource of the Youth Protection Branch within the CISSS de l'Outaouais. Every year, its four housing units welcome over a hundred young people living with difficulties such as behavioural problems, violence, substance abuse, unsafe sexual behaviours and suicidal risks. Sports and outdoor activities are an essential part of the rehabilitation program as they allow teenagers to develop prosocial behaviours with a view to returning to their respective living environments. The development of the outdoor courtyard offers youths an environment where they can channel their energy into easily accessible sports activities, reducing their stress and anxiety.

LICOX INTRACRANIAL MONITORING

Newly acquired LICOX equipment enables the provision of quality and improved services, allows for a better assessment of potential impacts, more targeted treatments and enhanced recovery chances. When a patient requires the

TRANSPORT BAGS FOR CHILDREN UNDER THE CARE OF THE YOUTH PROTECTION BRANCH

The "Baggage" project consists of offering new, durable, quality bags to the young beneficiaries of the Outaouais region's social services so that they can have a bag of their own and carry their most precious belongings in a more dignified way. For a young person, receiving this gift can have a major impact: it shows them that they are important, that they are not alone and that the community is there to support them. The bag also becomes an essential tool and creates a link between the young person and the professional caring for them.

Support for elderly autonomy

TWO NEW INFUSION PUMPS AT CHSLD LIONEL-ÉMOND

Over the past few years, the changing needs of CHSLD residents and the arrival of COVID-19 have led to a review of equipment requirements. As a result, the acquisition of two additional pumps was deemed essential in order to increase the number of devices available to the clientele, to promote recovery and to avoid the deterioration of fragile patients.

COMPUTERIZED LABORATORY REQUESTS IN CHSLD NURSING HOMES

The four CHSLD nursing homes in the Gatineau region (La Pietà, Ernest-Brisson, Lionel-Émond and Renaissance) have a capacity of over 600 permanent residents. These four facilities alone send thousands of blood and urine samples for laboratory analysis every year. Equipping all four nursing homes with computerized tools such as scanners and printers has made it possible to ensure a smoother treatment for all requests, reduce the time needed to obtain results, and speed up patient management while reducing the risk of errors related to the manual transcription of requests.

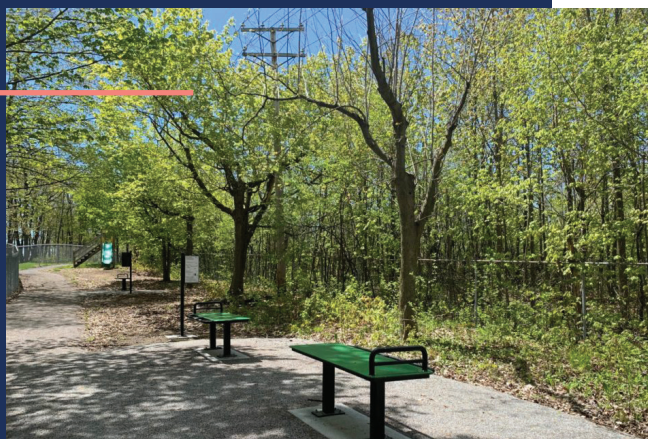
HOMELIKE FURNISHINGS (INCLUDING BATHROOMS)

The Lionel-Émond, La Pietà and Renaissance CHSLD nursing homes want to improve their interiors to better adapt them to their clientele. A project was launched to create a stimulating living environment by adding various decorative elements such as walls painted a neutral and pleasant colour, artificial plants, living-room-style comfort chairs, wall decorations in the bathrooms and bedrooms, etc. Interior design that feels like home can help create a stimulating and pleasant living environment and relieve loneliness by encouraging users to gather in common areas.

Mental Health

THE PIERRE-JANET THERAPEUTIC WALKING PATH

Aiming to create a pleasant living environment for patients in order to improve their state of health, the development of an outdoor space that includes a therapeutic walking path, exercise and activity stations and a playground. A good living environment is just as essential as medical or pharmacological treatment and healthy lifestyle habits for achieving wellness in patients suffering from severe and persistent mental illness.



The pandemic has been a painful reminder that each of us may suffer from psychological distress at some point in our lives. This project was made possible thanks to the generous contribution of several donors. I am convinced that the walking path will complement the treatment plan for inpatients and outpatients. I thank the Gatineau Health Foundation for believing in this project.

DR. RICHARD BERGERON
Psychiatrist

Recognition

The Gatineau Health Foundation is pleased to highlight the vital contribution of members of our community who get involved in various ways to develop and improve health care in the region. To this end, we give out awards each year to honour the remarkable support of certain citizens.



“MÉRITE DE LA PHILANTHROPIE” AWARD

In presenting this award, we wish to recognize the outstanding contribution of individuals and organisations to the improvement of health care in our region.

RECIPIENTS: Les Caisses Desjardins de l'Outaouais & Evolugen

Pictured left: Mr. Stéphane Miljours - General Manager, Caisses Desjardins de Hull-Aylmer
On the right: Mr. Rémi Moreau - Vice President, Government and External Relations and Ms. Chantal Dompierre - Director of Major Gifts and Planned Giving, Gatineau Health Foundation

HEALTH PARTNER AWARD

This award recognizes the exceptional collaboration of employees, managers or physicians of the CISSS de l'Outaouais towards the Foundation. This collaboration may be professional, volunteer, philanthropic or other.

RECIPIENT: All staff of the CISSS de l'Outaouais



Pictured: Mr. Luc Cadieux, President of the Board of Directors of the Gatineau Health Foundation, Mr. Michel Roy, President of the Board of Directors of the CISSS de l'Outaouais and Ms. Josée Filion, CEO of the CISSS de l'Outaouais



ORDER OF PATRONS

To celebrate its 30th anniversary, the Gatineau Health Foundation created its first ever order of special recognition for its supporters, the Order of Patrons of the Gatineau Health Foundation. Membership is reserved exclusively for individuals or companies that have contributed a minimum of \$1 million in various forms of support over the years, including through sponsorships, philanthropic donations or participation in Gatineau Health Foundation fundraising activities. The creation of this new order is a direct result of the numerous shows of generosity by the people and businesses in our region.

RECIPIENT : Fondation Choquette-Legault

Pictured: Ms. Lyne Choquette - Charter member and administrator, Mr. Richard Legault - Charter member and administrator, Mrs. Camylle Legault - Executive Director, charter member and administrator and Ms. Vanessa Pilotte - President and Chair of the Board

PARTNER IN ACTION AWARD

This award is given to members of the community who have organized fundraising activities for the Foundation. These activities stand out because of their originality and innovation, their results in terms of benefits, their influence in the community and the commitment of the members of the organizing committee.

RECIPIENTS : The Salut Champion team & Mr. Alex Guindon



Pictured: Mr. Alex Guindon & Salut Champion team

CLAUDE POIRIER DEFOY AWARD

This award is given to volunteers who have distinguished themselves through their commitment to the Gatineau Health Foundation.

RECIPIENT : Ms. Louise Poirier



Pictured: Mr. Claude Poirier-Defoy and Ms. Louise Poirier



**CERCLE
MEMORA**

This exclusive group was created to honour and recognize all generous donors who have confirmed a planned gift to the Gatineau Health Foundation.

Béland, Jean-François and
Bénédicte Fontaine-Bisson
Chaumont, Mylène
Coderre, Philippe
Gravel, Georges
Heafey, Steve
Léonard, Guy

Normand, Antoine and
Michèle Lafontaine
Paquette, Martin and
Daniel Gingras / Nordik
Spa-nature
Patry, Marc and Rock
Poulin / PPTA
Pelletier, Marie-André

Poirier, Louise
Tourigny, Jean
Tremblay, Alain
Tremblay, Pauline
Fortin, Jean-Paul

Donors 2021-2022

The calculation of donations used to produce these lists includes in-kind donations.

\$100 000 +

Charbonneau, Paul-André
Forum Equity Partners
Gervais, Yvan
La Fondation Choquette-Legault

\$50 000 to \$99 999

Caisse Desjardins de Hull-Aylmer
Énergie Renouvelable Brookfield inc./Evolugen

\$10 000 to \$49 999

Bell Canada
Children's Aid Foundation
Club Piscine
Députée de Hull, Maryse Gaudreault
Fonds de la Famille Gravel
Gauvreau, Jean Gazifère inc.
Guilmette, Benoît
La Fondation Mathis Dumais-Dontigny
Laporte, Madeleine
Laporte, Michel
Le Groupe Brigil
Les immeubles E. Tassé ltée
Livre Capitaine Acadie
Opération Enfant Soleil
Produits Kruger
Rallye Mitsubishi, Dormani Automotive Group
Rioux Pinsonnault, Madeleine
Slush Puppie Canada Inc.
Succession Bernard Cormier
Trottier, Pierre

\$5 000 to \$9 999

Carle, Claudette
Député de Papineau
Ministre de la Famille et Ministre responsable de la région de l'Outaouais, Mathieu Lacombe
Distribution Matériaux Lavoie
Fonds de bienfaisance Canada
Hannah, Robert
Industrielle-Alliance, Assurance et services financiers Inc.
Johnson & Johnson Shared services
La Fondation Oublie Pour Un Instant
Latourrelle, Louise
Les paniers de Noël Blitz Club Lions Bham
Mousseau, Pierre
Nguyen, Thi Anh Thu
Tremblay, Pauline
Ville de Gatineau

\$2 500 to \$4 999

Charron, Luc
Coderre, Philippe
Coopérative funéraire de l'Outaouais
Côté, Andrée
Dubé Blais, Georgette
Fidelity Investments Canada ULC
Finances Québec
Hudon, Monique
Lafreniere, Ginette
Les Concerts pour vaincre le cancer
Villemaire, Pierre

\$1 000 to \$2 499

9326-5767 QC Inc
Atomic Cartoons
BDO Canada S.E.N.C.R.L.
Blanchette, Gilles
Boislard, Michel
Bolduc, Simon
Bordeleau, Serge
Bourque, Claudette
Boutin, Sophie
Brown, Jacques-Paul
Brulotte, Brenda
Cadieux, Johanne
Caron, Gilles
Carpentier, Gilles
Castonguay, Lise
Champagne, Jocelyne
Charbonneau, Michèle
Charron, André
Chevaliers de Colomb, Conseil 2056
Chevrier, Robert
Collège Saint-Joseph de Hull
Commtech informatique
Corporation Financière Mackenzie
Côté, Brent
Da Costa Pacheco, Natalia
Député de Gatineau, Robert Bussière
Desjardins, Denise
Desrosiers, Chantal
Dompierre, Chantal
Dr Rémi De Champlain Inc.
Famille Pereira
Field, Patrick
Fondation Martineau
Drapeau
Fondation Momentum Jeunesse
Gauthier, Philippe
Gauvreau, Eric
Gélinas, Denise
Genest, Céline
Gestion Pierre Gravel Inc
Giroux, Robert
Homem, Helia
Hortop, Eric
Hotte, Sylvain
Hudon, Caroline
Innovélec inc.
La Fondation Adolphe et Roger Ducharme
La Manne de l'île
Labelle, Reynald

Labelle, Roch
Laberge, Julie
Lamontagne, Jean-Yves
Larose, Fernand
Le Nordik - Spa en nature
Lebeau, Jean
LeBlanc, Nicolas
Lemay, Maryse
Les Entreprises Jacques Carignan Ltée, Canadian Tire Gatineau
LJR Construction
MaLaurin, Corinne
Martin, Bob
Martin, Philippe
Martinez, Carmen
Ministère de la santé et des services sociaux
Mitchell, Claire
Moran, Stéphen
Nadine International Inc.
Ngo, Ly Chou
Norimanno, André
Parent-Charette, Line
Payment, Caroline
Perreault, Josée
Pigeon, Jean
Pilon, Michel
Placements IA Claington Inc
Poirier, Claude
Prud'Homme, Henri
Prudhomme, Patricia
Ratte, Philip
Rest 'O' Bord Le Pirate
Richard Steel Ltée
Rise up and Tee off golf tournament
Rocheleau, Guy
Salameh, Mohamed
Santerre, Guylaine
Saumure, Gilles
St-Onge, Léa
Succession André-Robert Chartrand
Succession Richard Delorme
Tremblay, Alain
Tremblay, Allan
Vaillancourt, Marc
Wandel, Charlotte
Zadorozny, Oleg

\$500 to \$999

Albert, Laurier
Allard, Denise
April, André
Assad Butcher, Linda
Assad, Christine
Assad, Peggy
Bégin, Daniel
Béland, Jean-François
Belfort, Maxon
Bercier, Joanne
Bergeron, Madeleine
Berthiaume, Normand
Bissonnette, François
Blais, Francine
Bohémier, Valérie
Boileau, Carole
Boileau, Julie
Boisclair, Jacques
Bonhomme, Claude

Bonin, Robert
Boucher, Colette
Boucher, Denis
Bourdeau, Lucie
Bouvier, Dominique
Boxhill, Amanda
Brown, Robin
Brunet, Sylvain
Bureau, Hélène
Bureau, Lucie
Carle, Aline
Caron, Daniel J
Carpentier, Marthe
Casson, Barbara
Charron, Lise
Chaumont, David
Chemin du rétablissement
Claude Bouchard
Medecin Inc.
Cléroux, Michel
Climatisation Maniwaki Inc
Clinique Podiatrique de Gatineau
Cloutier, Barbara
Cofomo Ottawa
Collin, Rémi
Couture, Robert
Cyr, Denise
Dagenais, Madeleine
Dalcourt, Gilberte
Delage, Michael
Deland, Hélène
Député fédéral, Argenteuil-La Petite-Nation, Stéphane Lauzon
Député fédéral, Gatineau, Steven Mackinnon
Député fédéral, Hull-Aylmer, Greg Fergus
Dery Latreille, Nicole
Des Lauriers, Odette
Désilets, René
Dionne, Renée
Distributions BMB (1985) SEC
Doucet, Sylvain
Dubé, Daniel Marc
Dubeau, Jean-Pierre
Dudek, John
Dumont, Jacques
Dupont, Vivian
Dussault, Josée
Educatout
Eliev, Sonia
Esri Canada
EXP Services Inc.
Farley, Donald
Foster, Harry
Fowler, Tina
Fréchette, Pierre
Gareau, Daniel
Gaudette, Etienne
Généreux, Royal
Georges, André
Gervaise, Amélie
Girard, Michel
Godmaire, Maxime
Grenier, Félix
Grenier, Lucie
Grenier, Mélanie
Grimard, Franque

Groulx, Mila
Guillemette, Albert
Hamel, Manon
Hargrove, George
Hart, Nicole
Honco Inc.
Hotte, Gilles
Houle, David
Joly, Manon
Kierans, Jane
Knowles, Stephen
Labelle, Martine
Labrie, Laurent
Lafontaine, Jean-Claude
Lafontaine, Michèle
Lafrance, Guy
Larocque-Seguin, Marc-André
Lasanté, André
Lavallée, Lorraine
Laverdière, Ines
Lavoie, Germain-André
Le Groupe P.F. Brisson
Peinture Inc
L'Écuyer, Conrad
Ledeme, Mireille
Lemay, Marie
Léonard, Guy
Lisa Marie Chartrand
Médecin Inc
Maisonneuve, François
Manulife - Compagnie d'assurances-vie
Marion, Denise
Marion, Philippe
Martin, Pierre
Martin, Yves
Massé, France
Massé, Micheline
Matte, Robert
McLaughlin, Pierre-Yves
Moamai, Javad
Moreau, Jacques
Morin, André
Munger, Lina
Neyron, Francine
Ouellet, Liliane
Ouellet, Lise
Ouellette, Robert
Palermé, Gaston
Palmer, Allan
Patrice, Julie
Pelletier, Charles
Perron, Odette
PJCi Inc.
PMB Huissiers de justice
Poirier, Louise
Porte Interprovincial
Potvin, Jacqueline
Poungui, Lionel-Ange
Ramachandran, Bhavani
Reber, Werner
Roy, Gilbert
Roy, Laurier L.
Rozenholc, Alexandre
Rozon, Marc
Savoie, Pierrette
Serrure Outaouais inc.
Simard, Mario
Société des alcools du Québec
St. Lewis, Jacqueline
Thorpe, D'Arcy
Thouin, Jean Pierre

Tourigny, Jean
Vaive, Lise
Verret, Louis
Villemaire, Caroline

\$250 to \$499

12094100 Canada Inc
(DBA Second Cup 9640)
3509231 Canada Inc
3987990 Canada Inc
93837540 Québec Inc
Chuck Reid
9427-8447 québec Inc
Adelakoun, Caleb
Adja, Flore
Angrignon, Pierre
Arbour-Maynard, Joëlle
Archambault, Michel
Assad, Paul
Aubé, Danielle
Aubé, Gilles
Aubertin, Claude
Barkwell, Vernon
Stewart
Barnett, Gordon
Beaudoin, Charles
Beaudry, Jean-Charles
Beauregard, Élise
Beauregard, Françoise
Béland Valade,
Réjeanne
Bérard, Isabelle
Bergeron, Luc
Berthiaume, Nicole
Bérubé, Richard
Bigras, Anne
Bilodeau, Olivier
Bisson, Michèle
Bisson, Patrick
Blais, Claude
Blouin, Daniel
Boissonneault, Maxime
Bond, Isabelle
Bonhomme, Pierre
Boone Plumbing and
Heating Supply Inc.
Bouchard, Justine
Bouchard, Marie-Josée
Boucher, Carmelle
Boucher, Guy
Bougie, Anne-Marie
Bourbonnais, Julie
Bourgault, Luce
Boutique de golf Éric
Robillard
Boutique Vidéotron
Buckingham
Bouton, Yves
Bouvier, Françoise
Bouvier, Yves
Brazeau Piché, Richard
Brouillette, Gérard
Brown, Deborah
Bruno Berthiaume
Électrique
Buteau, Louise
Cadotte, Michel
Castonguay, Blaise
Castonguay, Émilie
Castonguay, Line
Chantigny, Chantal
Charron, Lana
Chartrand, Francine
Châtillon, Marthe
Chamont, Marcelin
Chénard, Rodrigue
Chiasson, Martin
Clinique Uro-Physio inc
Corbeil, Sylvie
Corbin, Maurice

Corey, Janice
Cormier, Denise
Côté Santé Traitement
du sommeil inc.
Cote, Caroline
Côte, Ghislaine
Cote, Joanne
Coupal, René
Courville, André
Cousineau, Nicole
Couturier, Louis
Croisetti, Justin
Cunningham, James
Cyr, Luc
Cyr, Paul
Dagenais, Anne
Dagenais, Martine
Daigle, Christine
Daniel, Guy
De Winter, Koenraad
Decharf, Héléne
Denis, Denise
Deschênes, Héléne
Desjardins, Serge
Desjarlais, Claire
Desmeules, Jean-Marc
Dessureault, Jean-Guy
Deveault-Patry, Gisèle
Dion, Carmelle
Dion, Raymond
Dion, Veronique
DLS Construction Inc.
Dr Simon Gauthier
parodontiste Inc
Dugas, Diane
Duguay, Pascal
Dumais, Jean
Dupont, Héléne
El Jadidi, Kenza
Éthier, Colette
Favreau, Gilles
Fleury, Suzanne
Flirt Drinks inc.
Fondation Chelsea
Centre Meredith
Fondation
communautaire
d'Ottawa
Fortin, Andre
Francoeur, Claude
Gagnon, Denis
Gagnon, José
Gascon, Serge
Gasparini, Filiberta
Gaudreau, Yves
Gaudreault, Luc
Germain, Cécile
Gestion Dynapro
Management Inc
Giguère, Louise
Girard, Gilbert
Girard, Pauline
Gosselin, Chantal
Goulet, Pierre
Graham, Michael
Grandmaître, Benoît
Granger, François
Granger, Jacques
Gravel, Sylvie
Gravelle, Johanne
Groupe investors
Guèvremont, Serge
Guilbault, Denis
Guindon, Alex
Guizzetti, René
Halberstadt, Linda
Harvey, Nelson
Hayes, Ronald
Hébert, Yan
Héroux, Huguette

Howcroft Barnett,
Sandra
Huot, Lyse
Huska, Judith
Inksetter, Bruce
Inspection Outaouais
Jacques, Sylvie
Joanis, Michel
Jolicoeur, René
Jones, Doug
Junger, Michel
Kelly, Annie
Kelly, Stéphane
Kujala, Erik O
La Boîte à Grains
Labelle, Isabelle
Labelle, Jean
Laberge, Isabelle
Labrie, Marie-Claude
Lacasse, Kathleen nb
Lacroix, Nicole
Lafontaine, Françoise
Lafrance, Denis
Lafrenière, Michel
Lalonde, Jeannine
Lamarche, Lucie
Lambert, Héléne
Landry, Roger
Laniel, Yvan
Lanthier, Marguerite
Laplante, Anne
Lapointe, Élise
Laquerre, Chantal
Larabie, Albert
Larabie-Lesieur, Rachel
Laroche, Benoit R
Larocque, Denis
Latulippe, Claudette
Laurault, Yves
Laurin, Louise
Lavallée, Serge
Lavergne, Roger
Lavigne, Michel
Lavoie, Marc
Lavoie-Coutu, Adam
Le Lieu, Nina
Le Marché
Leblond, Héléne
Leclerc, David
Leduc, Robert
Lefebvre, Héléne
Lefebvre, Marie-Claude
Légère, Michel
Légrand, Jean-Paul
Lemaire, Carole
Lemaire, Simon
Lemay, Claude
Lepage, Juliette
Lepage, Lyse
Les Menuiseries
Lauriaut
Lescot, Eliane
Lessard, Marc
Lévesque, Marcel
Lévesque, Suzanne
Lizotte, Véronique
Loew, Laurianne
Loranger, Melissa
Louisiana-Pacifique Ltée
Maniwaki
Lupien, Yvan
Maalmi, Ghizlane
Madore, Suzanne
Magasin associé
Canadian Tire
Malépart, Anne
Malo, Caroline
Marie-Noëlle Michaud
MD inc
Martel, Yvon

Martineau, Pierre
Massé, Sylvain
Massicotte, Nicole
Mauffette, Jacques
McCambley Rogan,
Susan
Mcglynn, Michael
McKeeby, Donna
Mélancon, Roger
Meloche, Pierre
Ménard, Danielle
Mensah, Francis
Messier, Danièle
Michaud Aubrey,
Danielle
Mineault, Francine
Moderie, Marguerite
Mongeon, Jean-Pierre
Moore, Robert
Morin, Normand
Mousseau, Gilles
Mousseau, Héléne
Municipalité Notre-
Dame-de-Bonsecours
Murray, Daniel
Nadon, Andrée
Neveu, Sylvain
Newbury, Jack
O'Gallagher, Dennis
Ordre professionnel des
inhalothérapeutes
Ouimet, Raymond
Pappone, Rinaldo
Patenaude, Denis
Payment, Janie
Pearce, Paulette
Pearson, Kenneth
Pelletier, Martine
Péloquin Girard, Diane
Perreault, Sylvie
Petitclerc, René
Pharand, Denyse
Picard, Jean-Luc
Pichette, Ginette
Pièces Piché
Pierre Benoit et Johanne
Lafrenière Benoit
Pierre, Jean-René
Pierre, Jean-rené
Pigeon, Édith
Pilon, Roger
Poirier, Pierre
Poirier-Defoy, Claude
Potvin, Pierre
Poulin, Roger
Prévost, Alain
Prévost, Michel
Prud'Homme, Yves
Qualman, Harry
Quevillon, Robert
Quinn, Alain
Rainville, Martine
Raymond Chabot Grant
Thornton
Raymond, Paul
Reid, George
Renaud, Madeleine
Renaud, Monique
Rhul, Philippe
Richard, Jean-Luc
Richer, Nicole
Rinfret, François
Roberge, Lina
Robert, Claude
Robert, Héléne
Robertson Newell, Mary
Robinson, Pénélope
Rodgers, Janick
Rojas, Ronald
Rollin, Sophie

Rondeau, André
Roy, François
Roy, Jean-François
Roy, Mélanie
Roy, Richard Gaston
Samson, Denis
Sanscartier, Lionelle
Sasseville, Jasmine
Sauvé, Alexandre
Savard, Carole
Schiffo, Claudia
Séguin, Lise
Sirianni Mercier, Helen
Sormany, Jean-Sylvain
Soucy, Bertin
St-Louis, Aline
Stogaitis, Ginette
St-Pierre, Marcel
Strange, Edmund
Swanston, Michel
Tardif, Benoît
Tassé-Lamarche,
Cynthia
Teasdale, Yvon
Thibault, Jeannette
Tittley, Michel
Tremblay, Daniel
Tremblay, Marcel
Tremblay, Marie-Claude
Tremblay, Rénald
Turcotte, Sylvie
Turpin, Mathieu
Unsworth, Charles
Vachon, Marcel
Vallée, Loys
Villemaire, Jean-Claude
Villemaire, Maxime
Villemaire, Vincent
Villeneuve, Mathieu
Villeneuve, Robert
Vo, Mai
Votre Notaire Me
Véronique Semexant
Watson Huot, Renee
Wauthier, Claude
Winslade, Brenda
Wolfe, Christian

Thank you !

We respect the wishes of our donors to remain anonymous. If you believe that we have omitted your name, please let us know.

Cumulative donations — 1984–2022

The calculation of donations used to produce these lists includes in-kind donations.

\$1 000 000 +

Bourdeau, Pierrette et Rhéal
La Fondation Choquette-Legault
Lafortune, Ernest
Le Groupe Brigil
Marois, Maurice

\$500 000 to \$999 999

Banque nationale du Canada
Caisse Desjardins de Hull-Aylmer
Défi ski santé
Estate of the Late Gaston Fontaine
Fondation Daniel Brière
Les Rêves de Monique
Opération Enfant Soleil

\$250 000 to \$499 999

Amgen Canada
Audet, Réjean
Banque Scotia
Canada Vie/Canada Life - anciennement The Great-West Life Assurance Company
Cyclo-Défi contre le cancer (Equipe de Gatineau)
Énergie Renouvelable Brookfield inc./Evolugen
Fédération des caisses Desjardins Ouest
Fondation Pierre-Janet
Gervais, Yvan
Hydro-Québec, Affaires institutionnelles, accueil et commandites
L'Association des bénévoles des Hôpitaux du CSSS de Gatineau
Les immeubles E. Tassé Ltée
Omniurd Alexandre Picard
ORC Foundation
Sœurs de la Charité d'Ottawa
Tournoi de golf CHVO
VitalAire Canada Inc.

\$100 000 to \$249 999

Feu William Assad
Azrieli Foundation
Belley, Guy
Bouchard, Mario
Caisse Desjardins de Gatineau
Charbonneau, Paul-André
CHARLES HECTOR DUMONT M.D. INC.
CLMDP du CHVO - Hôpital de Hull
Club Optimiste de Hull
Club Piscine
CMDP du CSSS de Gatineau

Députée de Hull
Forum Equity Partners
Fresenius Medical Care Canada Inc.
Gazifère inc.
La Fondation Adolphe et Roger Ducharme
La Fondation Mathis Dumais-Dontigny
LEO Pharma Inc.
Mayrand, Michel
Morin, Marguerite
Pfizer Canada Inc.
Pharmacie Jean Coutu-153926 can inc
Poirier-Defoy, Claude
Rallye Mitsubishi, Dorman Automotive Group
Reny, Marcel
Rocheleau, Guy
Rona L'entrepôt Gatineau
Sanofi Bristol-Myers Squibb
Succession Patricia Larocque-Dubeau
Tremblay, Pauline
Triassi, Emmanuel
Trottier, Pierre

\$50 000 to \$99 999

8633509 Canada inc. (Construction JPL)
Arsenault, Ken
Association Culturelle Portugaise D'Aylmer
AstraZeneca Canada Inc.
Bellai Frères Construction Ltée
Besner, Jacques
Besner, Jean-Sébastien
Boehringer Ingelheim
Boston Scientific Ltd.
Bell Canada
Bureau, Marc
Caisse populaire Desjardins Rivière Blanche
Chabot, Diane
Charlebois-Trépanier Assurance et Gestion de risques
Children's Aid Foundation
Coopérative funéraire de l'Outaouais
Député de Chapleau
Desmarais, Marie
Desrosiers, Philippe
Développements Immobiliers Gamelin Ltée
Drouin, Michel
Durette, Michel
Exploitations forestières Laurin
Fondation B-3L
Fondation Camille Villeneuve
Fondation les Centres Jeunesse
Fonds Ligne de Front
Fonds de la Famille Gravel
Gauvreau Transport

Glatfelter Gatineau Ltée
Goyette, Michel
Guilmette, Benoît
Heafey, Pierre
Herman, Richard
Industrielle-Alliance, Assurance et services financiers Inc.
La Capitale groupe financier, Centre financier régional Nord-Ouest
Laboratoires Abbott Ltée
Laporte, Madeleine
Laporte, Michel
Lavallée, Serge
Le Tour des Quickie
Les Restaurants J'Marchand Inc.
Lévesque, Anne-Marie
Mainville, François
Marcil Lavallée
Michel Quesnel, Pharmacien
Munroe, Michael
Parade des Hommes
Quebecor World inc.
Recherche Neuro Hippocampe inc
Ricard, Daniel
Richard Bergeron Medecin Psychiatre
Rioux Pinsonnault, Madeleine
Saturn Aylmer
Spacelabs Healthcare (Canada) Inc.
Stryker Canada LP
Succession Annette Chevalier
Succession Marcel Delisle
Succession Nicole Leduc
Succession Russell Ormond
Tousignant, Jean
Ville de Gatineau

\$10 000 to \$49 999

144781 Canada Inc.
3987990 Canada Inc
6267734 Canada inc.
6486452 Canada Inc.
7546343 Canada Inc.
Pratique médicale Dr.Wadih Matar
9144-4695 Québec Inc., Pharmacie Wakefield
94964 Canada inc.
A4 Architecture + design
Abdeen, Nishard
Administration de l'aéroport international d'Ottawa
Albert, Laurier
Alcon Canada Inc.
AmerisourceBergen
APCHQ Outaouais
Apotex Inc.
Association des bénévoles des milieux d'hébergement du CSSS de Gatineau
Assurance vie Desjardins-Laurentienne
Aventis Pharma inc.

AXA Assurances Inc.
Baillard, Valerie
Banque de Montréal
Banque Laurentienne du Canada
Banque Royale du Canada
Barbara Personnel Inc.
Bard Canada Inc
Baxter Corporation
Bayer Inc
Beaudry, Charles
Beaudry, François
Feu Marcel Beaudry
Bédard, Yvon
Bétair, Louis
Bélisle, François
Bernier, Jean
Bernier, Jean-Pierre
Feu J.G. Bisson
BMO Groupe financier
Bob Taxi
Boily, Louis
Boisvert, Denis
Boivin, François
Boudreault, Jean-Claude
Boulet construction, 4176855 Canada Inc.
Bracco Diagnostics Canada Inc.
Brady, Pauline
Bristol-Myers Squibb
Brossard, François
Brunet, Benoit
Buffet des Continents, 9171-1549 Québec Inc.
C.H.S.L.D. - Employés C.H.S.L.D. de Hull
Caisse Desjardins du personnel de l'administration et des services publics
Caisse populaire Desjardins Coeur-des-Vallées
Canadian Tire d'Aylmer
Canadian Tire de Hull.
Les Placements Michel Mayrand inc.
Carle, Claudette
Caron, Denise
Carrière, Jacques
Feu Suzanne Carrière
Castonguay, Réal
Castonguay, Jean
CDM Construction
Celgene Inc.
Centre des services scolaire des Draveurs
Centre financier aux entreprises Desjardins de l'Outaouais
Charron, Luc
Chbeir, Walif
CHEO Foundation
Choinière, Michel
Chowier - Family Trust, Sam
Christopher Place
Medecine Professional Corporation
CHSLD de Hull
Cianciulli, Rino
CIBC
Cima +
Classique Millénium

Clinique de médecine Corey Richards
Club Kiwanis de Hull
Compagnie d'Emboutillage Coca-Cola
Connaisseur Braz/Café
Construction Broccolini Inc.
Construction Chartro
Construction Junic Enr.
Construction Outabec Inc.
Costco Wholesale Canada Ltd
Côté, Andrée
Da Costa Pacheco, Natalia
De la Chevrotière, Jean
De Santis, Éric
Delage, Pierre
Député de Gatineau
Déry, Laurent
Desjardins Assurances générales Inc.
Desjardins Sécurité financière
Desrochers, Florent
Desrosiers, Chantal
Dessau
Devcore Construction
Dextrateur, Gilles
Didomenicantonio, Gabriel
Dion, Lucie
Djiena, Alphonsine
DLS Construction Inc.
Dr Benoit
Chirurgien Orthopédiste Inc.
Dr Boris Theilliez
Chirurgien Orthopédiste Inc.
Dr Sylvie Lemonde
Radiologue Inc.
Dre Natalie Therriault M.D. Inc.
Drouin, Richard
Dubois, Robert
Duplessis, Pierre
Dupont & Dupont Ford
Dupras, Éline
Ed Brunet et Associés
Canada Inc.
Electromed International Ltée
Element, Paul-Emile
Eli Lilly Canada inc.
Entretiens paysagers Pelouses Plus
Estate of Edgar Auffrey
Fédération des caisses populaires du Québec
Ferland, Donald
Fidelity Investments Canada ULC
Filiatrait, Robert
Filion, Richard
Financière Sun Life
Flansbury, Marie
Fondation Canadian Tire, De Canadian Tire du Québec
Fondation des Maladies du Cœur du Qc
Fondation des Services de Santé d'Aylmer
Fondation du Foyer du

Bonheur et de la Pietà
 Fondation Ed Brunet Inc.
 Fondation Lafontaine Normand
 Fondation Myra-Farhi
 Fondation pour l'enfance
 Starlight
 Fondation RBC
 Fonds de charité des employés
 de Bowater
 Fonds de philanthropie de
 l'usine de Bowater
 Forget, Éric
 Forget, Nicole
 Fortin, Corriveau, Salvail
 Architecture + Design
 Fournier, Yvonne
 Frappier, Ghislaine
 Fujitsu Conseil (Canada) inc.
 Gala des Étoiles
 Gaspard, Henry Servantes
 Gaudy, Steve
 Gauthier Desloges, Thérèse
 Gauvreau, Daniel
 Gauvreau, Jean
 Genier, Guy
 Genivar
 George Weston Limited
 Gervais, Richard G.
 Ginsberg, Gingras & Associés
 inc.
 Global Group
 Gouvernement du Québec
 Graillon, Jean-François
 Granger, Jean
 Groupe Signature Savoie
 Guindon, Louis-Paul
 Hamelin, Bernard
 Hamilton, Philip
 Hannah, Robert
 Feu Madeleine Hinchey
 Hoffmann-La Roche Limitée
 Huot, Guy
 IBM Employees' Charitable
 Fund, IBM Toronto Employees
 Credit Union Limited
 Iko Industries Ltd
 Imasco Limitée
 Imprimerie Vincent
 Inovaco Ltée
 Investissements Canpro Ltée
 Janssen Inc.
 Jean, Guy
 Johnson & Johnson Medical
 Products
 Juri Gestion (95728 Canada
 Ltée)
 Katz, Joel
 Kilimandjaro
 Kings de Los Angeles
 La Fondation Oublie Pour Un
 Instant
 La Laurentienne Mutuelle
 d'assurance
 La Printanière - Vélo Plaisirs
 Feu Robert Labine
 Labrie, Laurent
 Lafontaine, Michèle
 Landry, Gauthier & associés inc.
 Landry, Louis
 Lanthier, Johanne
 Lareau, Christian
 Laroche, Bruno
 LAUZON - Planchers de bois
 exclusifs inc.
 Lauzon, Pierre-Paul
 Laviolette, Jacques
 Lavoie, Gilles
 Feu Roland Lavoie
 Le Bifthèque
 Le Groupe Heafey, 393021
 Alberta Ltd

Le Nordik - Spa en nature
 LeBlanc, Nicolas
 Leclerc, Claude
 L'Écuyer, Conrad
 Légion Royale Canadienne 30
 Léonard, Guy
 Lepage, Martin
 Leroux, Rhéal
 Les Constructions En-Phase
 inc.
 Les Consultants Saucan inc.
 Les Entreprises Jacques
 Carignan Ltée, Canadian Tire
 Gatineau
 Les Entreprises Marc Dubé Inc.
 Les Entreprises RGMSP Ltée
 Les Habitations Bouladier Inc
 Les Olympiques de Gatineau
 Les Restaurants du Marchand
 Inc.
 Les Restaurants McDonald du
 Canada Limitée
 Les Restaurants Sylvain Vincent
 Inc.
 Livre Capitaine Acadie
 Location A.L.L. inc.
 Loeb Inc.
 L'Ordre des Filles d'Isabelle,
 No. 674
 Lougheed, Kendall
 Lundbeck Canada Inc.
 MacLaurin, Corinne
 Magasin Associé Canadian Tire
 Maltais, Jacques
 Marcotte, Paul
 Marois Électrique Ltée.
 Marois, Martial
 Marrot, Danielle
 Massicotte, Claude
 Medacta International
 Medtronic of Canada LTD
 Mercier, Jean-François
 Merck Frost Canada Inc.
 Michele Girouard Md. Inc.
 Ministre de la Santé et services
 sociaux
 Mongeon, Jean-Pierre
 Feu Pierre Moreault
 Morimanno, André
 Morin, André
 Morissette, Alphonse
 Mousseau, Pierre
 Nadeau, Richard
 Novartis Pharma Canada Inc.
 OB Prestige Auto Inc.
 O'Donnell, James-Peter
 Ortho Biotech
 Otsuka Canada
 Pharmaceutique
 Papiers Fraser
 Papiers Scott Limitée
 Paradis, Roger
 Paul Tousignant, pharmacien
 Perron, Odette
 Pharmacie Jean Coutu
 Pharmacie Nadia Hobbs
 Phoenix Medical (9136-9983
 Québec Inc.)
 Picard, Alexandre
 Pièces d'Autos M & Jean-Guy
 André Ltée
 Pigale
 Pigeon, Jean
 Pilon Ltée
 Place, Christopher
 Placement CI
 Poirier, Claude
 Poirier, Roch
 Polanski, Margaux A.
 Pomerleau, Francis
 Poulin, Pierre

PPTA Assurances-Conseils
 Produits Kruger
 Proviso
 Prud'Homme, Henri
 PVP Fonds de placement
 Raymond Chabot Grant
 Thornton Administration
 Raymond, François
 RBC Foundation
 Restaumac Outaouais inc.
 RevMat
 Ricard, Daniel
 Ricard, Jean
 Rioux, Charles H.
 Robert, Julie
 Roy, Robert
 Royal Canadian Legion . Br. 33
 RPGL Avocats
 Ruddy, Terrence
 Sabine, Jack
 SANOFI
 Sauvé, Jacques
 Savard, Ida
 Savard, Monique
 Sentinelle-Santé
 Services d'injection de Xolair
 Servier Canada inc.
 Shire Biochem Inc.
 Simbol Test Systems inc.
 Slush Puppie Canada Inc.
 Smith&Nephew
 Smith, Eddy J.
 Société de bienfaisance,
 Banque Royale du Canada
 Société du Groupe
 d'Embouteillage Pepsi
 Solomon, Peter
 Source médicale
 Sporthèque
 Stantec Experts-conseils Ltée
 St-Jacques, Marc-André
 St-Pierre, André
 Succession Gérard Grenier
 Succession André Gagné
 Succession André Lévesque
 Succession Bernard Cormier
 Succession Elsie Robindaine
 Saumure
 Succession Hélène Lévesque
 Succession Jacqueline
 Desmarais
 Succession Madeleine Hinchey
 Succession Marie Fauvelle
 Succession Marion June
 Borland
 Succession P.-A. Lalonde
 Succession Roch Lefebvre
 Succession Rosa Bouchard-
 Pichard
 Succession Rosette Chartrand
 Succession Thérèse Robinson
 Sun Life du Canada,
 Compagnie d'Assurance-vie
 Syndicat canadien de la
 fonction publique section
 locale 4160
 Feu Eugène Tassé
 Telus
 Tétrault, Éric
 The Harold Crabtree
 Foundation
 Théorêt, Simon
 Therrien, Ghislaine
 Thibault, Chrétien
 Toitures Raymond et Associés
 Inc
 Tournoi de Golf Dérick Brassard
 Tournoi de Golf Ghislain
 Larouche
 Tournoi de Golf The Force
 Transcontinental inc.

Tremblay, Allan
 Trottier, James
 Université de Montréal,
 Direction des finances
 Vachon, Louis
 Veillette, Claude
 Vidéotron (Laurentien) ltée
 Villa Toyota Inc.
 Vitrerie de la Vallée
 Wilson Kenny, Audrey
 Zadorozny, Oleg

Thank you !

We respect the wishes of our donors to remain anonymous. If you believe that we have omitted your name, please let us know.



INDEPENDENT AUDITOR'S REPORT ON THE SUMMARY FINANCIAL STATEMENTS

To the Trustees of the Gatineau Health Foundation,

**Raymond Chabot
Grant Thornton LLP**
Office 100
1839 Saint-Louis
Gatineau, Québec
J8T 4H3

Opinion

The summary financial statements, which comprise the summarized balance sheet as at March 31, 2022, the summarized statements of operations, changes in net assets and cash flows for the year then ended, are derived from the audited financial statements of the Gatineau Health Foundation (hereinafter "the Foundation") for the year ended March 31, 2022

In our opinion, the accompanying summary financial statements give a true and fair view of the audited financial statements in accordance with the criteria described in the additional note Basis of presentation.

Summary financial statements

The summary financial statements do not contain all the disclosures required by Canadian Accounting Standards for Not-for-Profit Organizations. Accordingly, the summary financial statements and the auditor's report thereon are not a substitute for the audited financial statements and the auditor's report thereon. Neither the summary financial statements nor the audited financial statements reflect the effects of events subsequent to the date of our report on the audited financial statements.

The audited financial statements and our report thereon

We expressed an unmodified opinion on the audited financial statements in our report dated 1 June 2022.

Management's responsibility for the summary financial statements

Management is responsible for the preparation of the summary financial statements, based on the criteria described in the accompanying note Basis of presentation.

Responsibility of the auditor

Notre Our responsibility is to express an opinion on whether the summarized financial statements are a fair summary of the audited financial statements based on our procedures in accordance with Canadian Auditing Standard (CAS) 810, *Engagements to Report on Summary Financial Statements*.

Gatineau, le 3 juin|2022

¹ MBA, CPA auditor public accounting license no A134381

Summary financial statements

SUMMARY BALANCE SHEET (as of 31 March 2022)

Assets	2022 (\$)	2021 (\$)		2022 (\$)	2021 (\$)
Short term	3,859,897	4,874,216	Revenues	2,269,062	1,374,434
Portfolio investments	10,524,368	9,888,625	Expenses	899,769	540,944
Fixed assets	863,294	872,130	Net revenues	1,369,293	833,490
Pledged contributions	-	87,500	Other income (expenses)	990,714	1,374,632
	15,247,559	15,722,471	Excess of revenues over expenses (before administration fees, donations to CISSS de l'Outaouais and discontinued operations)	2,360,007	2,208,122
Liabilities			Administration fees	707,731	346,743
Short term	963,672	2,315,017	Donations to CISSS de l'Outaouais	1,116,127	1,940,038
Deferred contributions	7,639,808	7,254,436	Deficiency of revenues over expenses before discontinued operations	536,149	(78,659)
	8,603,480	9,569,453	Discontinued operations	(45,088)	855,455
Net assets	6,644,079	6,153,018	Excess (deficiency) of revenues over expenses	491,061	776,796
	15,247,559	15,722,471			

SUMMARY OF CHANGES IN NET ASSETS (as of 31 March 2022)

	Related to fixed assets (\$)	Internal restrictions (\$)	Unappropriated (\$)	2022	2021
				Total (\$)	
Start-of-year balance	(384,409)	2,766,299	3,771,128	6,153,018	5,376,222
Excess (deficiency) of revenues over expenses	(49,528)	-	540,589	491,061	776,796
Transactions related to fixed assets	1,297,231	-	(1,297,231)	-	-
Internal restrictions	-	(1,084,958)	1,084,958	-	-
Year-end balance	863,294	1,681,341	4,099,444	6,644,079	6,153,018

SUMMARY CASH FLOWS FOR THE YEAR ENDED 31 MARCH 2022

	2022 (\$)	2021 (\$)
Operating activities		
Excess (deficiency) of revenues over expenses	491,061	776,796
Non-cash items		
Depreciation of tangible fixed assets	49,528	184,939
Change in fair value of investments	(136,831)	(1,201,875)
Loss on disposal of fixed assets	-	592,436
Net change in working capital items and pledges	108,980	(1,121,726)
Cash flow from operating activities	512,738	(769,430)

Investment activities

Net change in term deposits pledged as collateral	100 000	-
Marketable securities	(3,968,168)	(3,002,723)
Transfer of marketable securities	3,290,349	3,011,683
Investments	(4,780,761)	(3,994,433)
Disposal of investments	4,346,462	3,995,596
Fixed assets	(40,692)	(38,515)
Disposal of fixed assets	-	1,475,831
Cash flow from investing activities	(1,052,810)	1,447,439

Financing activities

Repayment of loans and cash flows from financing	(1,256,539)	(485,269)
Net increase (decrease) in cash and cash equivalents	(1,796,611)	192,740
Cash and cash equivalents at beginning of year	2,652,652	2,459,912
Cash and cash equivalents at end of year	856,041	2,652,652

The accompanying notes are an integral part of the summary financial statements.

ACCOMPANYING NOTES

1. BASIS OF PRESENTATION

These summary financial statements include the main totals (subtotals and totals) of the related full financial statements and information from the notes to the full financial statements on items that have a broad or other material effect on the summary financial statements.

In the opinion of the Foundation's management, the information in the notes and schedules to the financial statement have no generalised effect or other material impact on the summary financial statements. Accordingly, no further notes and


disclosures are presented in the summary financial statements. The complete financial statements are available upon request at the following address:

Direction Générale

FONDATION SANTÉ GATINEAU
900 de la Carrière Blvd., suite 202
Gatineau, Quebec J8Y 6T5

Once again this year, your many donations were used to improve the health of the Outaouais community.

We thank you for your trust and generosity.



All actions of the Board of Directors and our employees, volunteers, donors and partners are based on these values to which we subscribe:

**Engagement, Expertise,
Integrity and Innovation.**



Tel. 819 966-6108

Fax. 819 966-6012

900 de la Carrière Blvd., suite 202
Gatineau (Quebec), J8Y 6T5

fondationsantegatineau.ca

